



innovation. performance. quality.

New!

Quick Application
Guide Inside

Back Injuries?
High Insurance Costs?
Operator Fatigue?
Equipment Damage?

Problem Solved



✓ Protect Your Operators ✓ Protect Your Equipment ✓ Increase Your Productivity

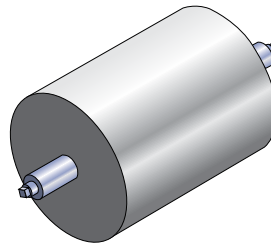
Schlumpf
Ergonomic Shaft Handling
Systems

How To:

1. Determine your initial requirements using the application guide to the right.
2. Review the information below for the type of equipment you may need.
3. Contact us with your application information for additional guidance.

1.

Quick Application Guide



Required Information

Do You Have Drawings Of The Shaft: Y___ N___

Exact Shaft Diameter: _____

Multiple Shaft Sizes: Y___ N___

Exact Shaft Weight: _____

Shaft Body Material: _____

2.

Portable Shaft Handlers

HSH-300-PMC



The HSH-300-PMC is the most economical shaft handler offered by Schlumpf. All functions are manual. The hydraulic lift is foot pump operated. The tooling clamp is powered by a machine screw. See tooling descriptions at right for more information. The HSH-300 is lightweight and highly maneuverable. 300 lbs (130 kg) capacity. Ideal for printing plants with explosive atmospheres.

EMC-B10-PEC



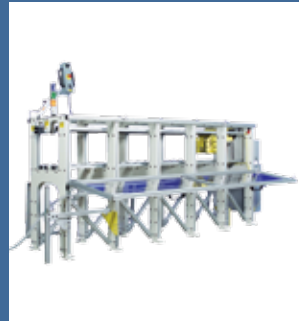
The EMC-B10-PEC offers all of the advantages of the ESH design with a powered drive. The EMC-B10 makes handling even the longest and heaviest shafts fast and easy. Available with manual or powered side shift. Controls can be integrated into the truck's tiller, or separate with a hand held pendant. See tooling descriptions and options at right for more information. 500 lbs (226 kg) capacity.

ESH-300-PEC



The ESH-300-PEC is our smallest battery powered shaft handler. Lift functions are powered by an electric linear actuator. Tooling is equipped with an electric shaft clamp. See tooling descriptions at right for more information. All functions are controlled with a small handheld pendant. 300 lbs (130 kg) capacity.

ESH-1000-SM



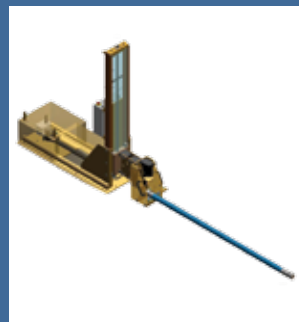
ESH-1000-SM machines handle the longest and heaviest shafts with ease. Use in conjunction with a hydraulic lift table to raise the shaft into the tooling. ESH-1000-SM's motorized tooling extracts the shaft onto a bed of rolls for complete safety. Manual, semi-automatic or fully automatic operation. 1,000 lbs (450 kg) capacity.

ESH-500-PEC



The ESH-500-PEC is our heavy-duty battery powered shaft handler. Lift functions are powered by an electric linear actuator. Tooling is equipped with an electric shaft clamp. See tooling descriptions at right for more information. All functions are controlled with a small handheld pendant. 500 lbs (230 kg) capacity.

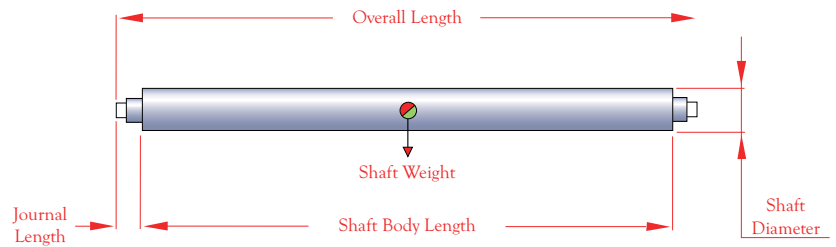
ESH-500-PEC-HTB



ESH-500-PEC-HTB machines hold the shaft while the roll is extracted from it. Rolls are moved via conveyors or carts. The lateral travel of the machine is used only to insert the shaft journal into the tooling. Manual, semi-automatic or fully automatic operation. 300 lbs (130 kg) capacity.

Stationary Shaft Handlers

Maximum Lifting Height: _____
 Minimum Lift Height: _____
 Machine Type: Unwind _____ Rewind _____
 Number Of Roll Changes / Hour: _____
 Are There Any Overhead Obstructions: Y___ N___
 Are There Any Obstruction On The Floor: Y___ N___



Custom Shaft Handlers



No job carries more risk of back injuries and repetitive motion injuries than inserting, extracting and lifting heavy expanding shafts by hand. What if a standard machine won't suit your application? Schlumpf's engineers can design a shaft handling machine to suit your exact requirements. Manual, electric, stationary, portable...No problem! Simply call or E-mail with your requirements and we will present you with a design to match your needs.

Important Information!



Schlumpf shaft handling machines are intended only as safety devices to eliminate the manual handling of heavy expanding shafts. Shaft handling machines add a step in the production process, so by their very nature they are often more time consuming to use compared to extracting a shaft by hand (if and when manual handling is even possible). When thinking about purchasing a shaft handling machine, safety should be the primary consideration. It may take some time for the operators to become accustomed to the proper and best use of a shaft handling machine. Visual aids to determine the shaft center and roll position are helpful. Still unsure? Ask about an in-house trial of the machine of your choice.

Tooling & Other Options

Manual Clamp



Manual shaft clamps make fixing the shaft end in the tooling easy. Holding force is generated by turning an actuator handle. Ideal for manually powered machines. Manual tooling will accept anvils for multiple shaft sizes and journal configurations.

Electric Clamp



Electric shaft clamps make fixing the shaft end in the tooling fast and easy. Electric clamps have 1,000 lbs (450 kg) of clamp force, and 5,000 lbs (2270 kg) of holding force. Electric clamps easily handle multiple shaft sizes and journal configurations.

Side Shift



Side shift enables the operator to align the shaft with the tooling without repositioning the machine. Side shift is available in manual or electric versions.

Pivot Tooling



When a shaft is being inserted or extracted, pivoting tooling allows the shaft to follow the path of least resistance to prevent binding in the core.

Other Options

- Shaft end stops to regulate insertion depth
- Laser pointer to locate shaft center
- Adjustable limit switches to locate loading or unloading height
- Mirrors to aid in alignment of shaft end with tooling

3. Contact Schlumpf to find the best solution to meet your requirements!

The rising cost of health care and workers compensation insurance make protecting your operator's health and productivity ever more vital to the success of your business. You can't afford to lose operators to a back injury or make them suffer from the fatigue that result from handling heavy expanding shafts day after day!

The U.S. Department of Labor reports that "Back injuries are the nation's number one workplace safety problem." More than one million workers suffer back injuries in the U.S. each year, costing industry billions of dollars on top of the pain and suffering borne by employees.

Schlumpf Ergonomic Shaft Handling Systems will minimize or eliminate the risk of operator injury and fatigue, lower your insurance costs and protect your valuable equipment from damage. Our engineers take the time to analyze your process, understand your needs and find the best fit for your application. Let us solve your shaft handling problems. Visit us on the web or call us directly to speak with one of our shaft handling specialists.

Schlumpf ... Problem Solved.



Matrix Material Handling, Inc
10700 N Garnett St.
Oklahoma City, OK 73114
405-858-0222 or 866-515-7500

Schlumpf, Inc.
15 Enterprise Drive
Windham, Maine 04062
USA



877 460 4535, Toll Free
207 893 1903



207 893 1905



www.schlumpf-inc.com
info@schlumpf-inc.com

