

# 6200 SERIES



## Specifications:

- Flat Belt End Drive, Cleated Belt End Drive and Center Drive models
- Loads up to 120lbs (54kg)
- Belt speeds up to 255 ft/min (78 m/min)
- Belt Widths: 1.75" (44 mm) to 12" (305 mm)
- Conveyor Lengths: 2' (610 mm) to 12' (3,658 mm)
- 1" (25 mm) diameter head and tail pulleys
- One piece stainless steel frame
- CE models available

## Features & Benefits:

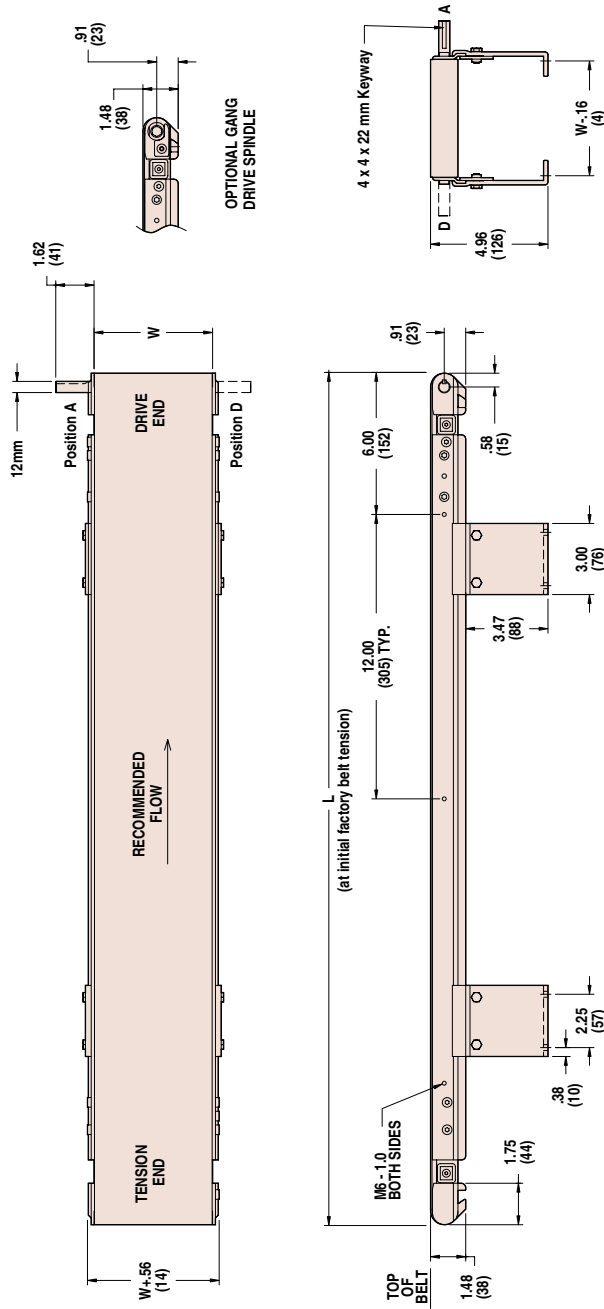
- Quick 5-minute belt change for increased uptime
- Rack and pinion design offers fast single-point belt tensioning
- Mild steel head and tail plates with black nitrite finish
- V-groove frame with guided belt ensures accurate tracking
- Wedge-Lok™ system for impact protection
- Streamlined design fits where other conveyors do not
- Low maintenance sealed bearings in both head and tail pulleys
- Quick-clamp rail for easy mounting of bolt-on accessories
- Durable 0.25" (6 mm) thick bottom wiper
- Motion sensor switch ready



**Wedge-Lok™  
System**



**V-Guided  
Belt Tracking**



W = Conveyor Belt Width Dim = in (mm)

**STANDARD OPTIONS**

**Gang Drive Pulleys**

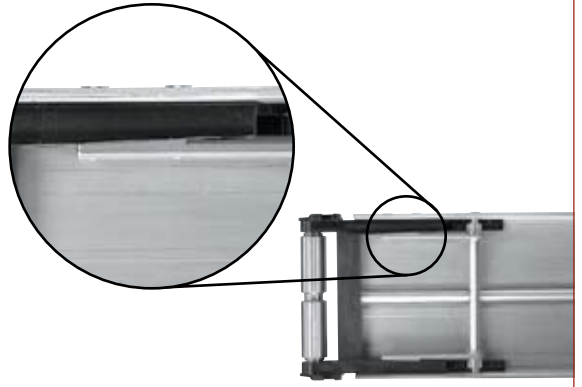
allow you to drive multiple conveyors with one gearmotor



**SPECIAL FEATURES**

**Wedge-Lok™ Protection**

protects the conveyor end from damage by locking the pulley end from movement on sharp impact



**STANDARD MODELS**



**Flat Belt End Drive**



**Cleated Belt End Drive**



**Flat Belt Center Drive**

For more information, go to [www.dorner.com](http://www.dorner.com). Call 800.397.8664 or 262.367.7600.

Due to the wide variety of drive set ups and applications, point of installation guarding is the responsibility of the end user.